

KEY FEATURES CONT.

- **Anti pinch function:** If the unit is obstructed during a closing operation, the anti pinch function will reverse the direction of travel momentarily, and then pause all movement. The operation LED will flash red to indicate that the anti pinch function has been activated. When the button at the top of the unit is pressed again, the unit will fully raise and return to normal operation.
- **Anti-collision function:** If the unit encounters an obstruction during a raise operation, the anti collision function will activate and the unit will pause. To indicate that the anti obstruction function has activated, the indicator LED will flash yellow. Once the obstruction has been cleared, the unit can be returned to normal operation by pressing the button on the top of the unit once again.
- **One key design:** This item has been designed with simplicity and ease of use in mind. For this reason, all operations are controlled using a single button on the top of the unit.
- **Water resistant design:** In a closed state, this product is designed to prevent water ingress by preventing spillages from entering the product body and potentially leaking into the mains sockets.
- **USB charging:** This unit is equipped with 1 x USB charging socket & 1 x Type C charging socket. This allows portable devices to be charged from the convenience of your worktop.

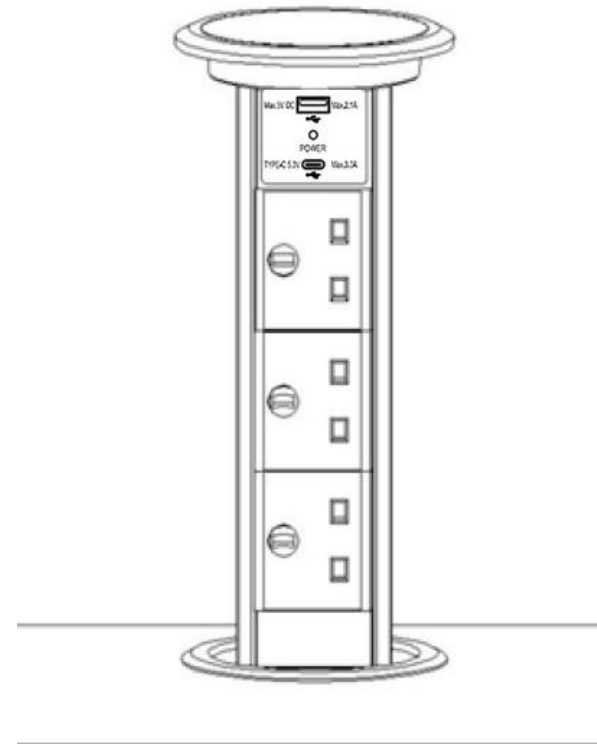
WIRELESS CHARGER FUNCTION:

- The mobile phone needs to support the wireless charging function.
- When the product is powered on, the mobile phone is placed on the top cover of the product and will be automatically charged.

LEYTON

Motorised Pop-Up Socket

POW-6M1 / POW-6M1-B



UNPACKING

Remove contents from the packaging and lay out on cardboard or other protective surface to avoid damage. Check the contents are correct and free from damage before proceeding. If any parts are missing or damaged, please contact your supplier.

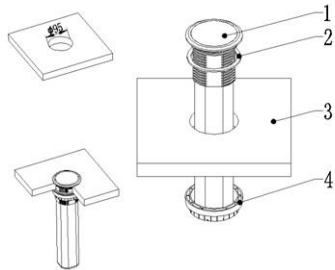
SAFETY INFORMATION

Install and use this product with care. Please read this instruction booklet thoroughly before installation and carefully follow all instructions. Do not use this product for any purpose or in any configuration not explicitly specified in this instruction manual. We hereby disclaim any and all liability for injury or damage arising from incorrect assembly, mounting or usage of this product.

CAUTION

This motorized pop-up socket must be securely installed on a solid horizontal surface.

INSTALLATION DIAGRAM



KEY

- | | |
|-----------------|-----------------|
| 1. Product Body | 2. Silicone pad |
| 3. Worktop | 4. Locking Ring |

INSTALLATION INSTRUCTIONS

1. Use a suitable hole cutter to make a 95mm hole in the worktop(3).
2. Fix the Silicone pad(2) onto the Product body(1).
3. Insert the product body (1) into the 95mm hole in the worktop(3). Rotate locking ring securing tightly to the top.
4. Connect the supplied power lead to the connector on the base of the product body (1).

KEY FEATURES

- Accidental Operation Protection: This product is fitted with an automatic delay timer to prevent accidental operation. Press the button on the top of the unit for 2 seconds to enable the motorized raise/lower function. This function works to protect both children and animals.
- Light design:
 - Dim Green (static): The unit is in a lowered position and is ready to be used.
 - Bright Blue (flashing): A raise operation is currently in progress.
 - Dim Blue (flashing): The unit has been paused during a raise operation.
 - Dim Blue (static): The unit is fully raised and ready for use.
 - Bright Green (flashing): A lowering operation is currently in progress.
 - Dim Green (flashing): The unit has been paused during a lowering operation.
 - Yellow (flashing): The anti collision function has activated during a raise operation.
 - Red (flashing): The anti pinch function has activated during a lowering operation.

Dimensions: 490mm x 112mm
Hole Cut Out Diameter: 95mm
Rated Voltage Range: AC95V-250V
Rated Frequency: 50Hz / 60Hz
Rated Current: 13A
USB Supply: 2.1A
Type C Supply: 3A